

2077/78

Company Profile



Web:
hello@saradasumnima.com.np
www.saradasumnima.com.np
[f saradasumnima](https://www.facebook.com/saradasumnima)



Contact:
[+977]9851133303
Mobile:
[+977]9851133303



Sarada And Sumnima International Pvt. Ltd.
Pepsicola,
Kathmandu Metro-32, Kathmandu
NEPAL

Page Content

| | | | |
|-------------------|-----------|-------------------|-----------|
| Introduction | 02 | Our Works | 11 |
| About Us | 03 | Trusted Clients | 13 |
| Word From CEO | 04 | Future | 15 |
| Our Team | 05 | Health & Safety | 16 |
| Our Passion | 06 | Companies Gallery | 17 |
| Our Services | 08 | | |
| Company's History | 10 | | |

Introduction

Sarada and Sumnima International Pvt Ltd is the electrical company, established in 2018 by Mr. Prakash Baral, providing electrical power solutions in for municipalities, institutions and public organizations registered in NEPAL. The company has been formed by a group of professionals having vivid experience and wide exposure in electrical and power sector. In 2018, SSI consists of few employees and with increased team members including a director, a manager, a junior procurement officer, engineers, master installer electricians, electrical assistants and general laborer. Most of people involved here are qualified business, management and engineering graduates from the universities. The company have been consistently providing reliable support services

and consultancy to a wide variety of corporate houses either in the capacity of executive or as business partner or consultant. It is a company where professionals from both technical and functional field group come together with an objective of providing appropriate power solutions. The key to the company's success is the maintenance of a close working relationship with the clients through ensuring the best possible solutions to their needs; to establish and maintain a thorough knowledge and understanding of client's objective and help them maximize the benefits. We want to establish ourselves as the best choice in electrical services, consultancy and development by offering the full spectrum of services.



About Us



Sarada And Sumnima International (SSI) is a full service industrial electrical contractor that delivers first-rate electrical systems and offers 24/7 rapid response support.

It is a privately owned supplier & service provider company established in 2018 which is Leading company in the sector of Electrification and Energy sector of Nepal. SSI continuously focus on the improvement and development of services and has the broadest portfolios of Engineering, materials and service in this sector within Nepal. It has a good partnership with different equipment manufacturers and infrastructure providers within the Electrification, Power Equipment and Energy sectors. SSI has

wide range of in-house business acumen and considerable local knowledge in order to provide best suitable solution and service as per the requirement of clients. This combination of business and technical acumen makes Clients to think and choose us in knowledge that their service provider is dependable and reliable, along with in depth local knowledge that relieves our clients time consuming and costly process, allowing them to effectively run a profitable enterprise.





CEO

Prakash Baral
CEO / Founder

SSI was started by highly experienced and qualified professionals with the intention to provide all types of services in electrical, electronics, and telecommunication sector to provide different services revolutionizing technology and to cope up with the modern infrastructures. SSI is registered and recognized by the Government of Nepal (GON). SSI is a cohesive group of engineers and professionals who are dedicated on supplying standard electrical infrastructure products and services. It is well equipped in every division for working in different projects related to the national electrical system and construction along with necessary training, consultancy and services of various mechanical, electrical and electronics products. We as a staff, provide complete and reliable solution for the installation, commissioning and maintenance of all processes in the sector of electrical power systems as well as infrastructures including power solution.

In a short period of time, we have recorded successful completion of different projects. Our services include supply, delivery and commissioning of electrical distribution network, installation and commissioning, civil works and Operation and Maintenance, RF Planning and Optimization including DT along with the required training and consultancy services of Electrical Distribution System.

Our Team



Kedar Nath Poudel
Consultant



Madan Upadhayay
Senior Project Manager



SSI helps fresh graduates to build their career by giving the exposure and experience in the field of construction and electrical as a result they can be the skilled manpower of the nation. We are devoted in building skilled manpower by providing the new ones with the tools and exposure in the respective field.



Our Passions

Our Mission

It is our mission to respond with urgency, expertise and professionalism to minimize the length and frequency of downtime. We're committed to a high quality of workmanship and provide a safe work environment on all projects. We know that people do business with companies that meet their needs and provide reliable service. We attribute our success to building strategic partnerships and treating customers the way we want to be treated. We believe the quality in our work will represent us for years to come.

Our Visions

Our vision is to achieve 100% customer satisfaction by delivering quality products and services at an affordable cost. Our forward vision is to strive to become an entity in technology based corporate solutions, capable of demanding unconditional response from the targeted niche. We also believe that for our scope of improvisation – sky is the limit and we are always ready to take our achievements to the next level. We are growing and would always like to remain on the growing chain.

Our Status

- Experience and Reputation
- Financial Stability
- Service Excellence
- Insurance



We provide range of solutions and services related to electrical system for different organization from Municipalities to the Government/non-Government Agencies as well to the Departments both at National, Provincial, Local and to Private sectors.

We offer complete turnkey solutions in power transmission systems and associated subsystem, sub-stations and industrial power systems.

Our Services

“

We offer activities like Survey, detailed soil investigation, civil construction of foundations, erection of towers, stringing of conductors and testing & commissioning of line.

Electrical Installation

The fixed electrical installation is the installation of distribution line/network with service transformer, electrical machinery and electrical components that are fixed to electrical poles leading to consumer building. Installations include, for instance, supply of channels, brackets, switch gears, nuts and bolts and other miscellaneous items that put up all together for supply, delivery, installation, testing, and commissioning of electrical distribution network. SSI will plan and design, select and install, commission, test, report, maintain, fault find and repair systems to a high standard. Work organization and self-management, communication and interpersonal skills, problem solving, flexibility and a deep body of knowledge are the universal attributes of our employees.

Electrical Maintenance

Maintenance involves fixing any sort of electrical device should it becomes out of order or broken (known as repair, unscheduled, or casualty maintenance). Electrical maintenance means the care and checklist of electrical equipment or instruments to avoid any breakdown or fault. To tighten all electrical connections, to upgrade the power rating of safety switches is also a part of electrical maintenance. Electrical maintenance services offered at all levels, industrial, commercial and residential. SSI provides premier electrical contracting and maintenance for public sectors and private customers in commercial, domestic and industrial markets. We offer short- and long-term maintenance contracts.

Civil Works & Optimization

SSI have experienced team capable of managing to construct sites according to customer specifications. It has a verifiable track record of high-quality site builds. Rigid quality control procedures ensure that all equipment and components are provided to site are of highest quality standard and surpass required specification when handed over. To the International standard, client will get fully functioning service with warranty compliant documentation.

MEACH offers a wide range of optimization services for all types of equipment. Our solutions are customized to derive the maximum return on capital investments and reduction of operational expenditure.

History

SSI was born in 2018, in Kathmandu. The electrical contracting company serviced the community by supplying electrical components for organizations and government entities.

Over the years, SSI earned a reputation for excellence, quality and quick response, and soon became a major contractor in the field.

To keep pace with today's fast-growing, innovative business climate, we strive to remain on the cutting edge of electrical installations by using the latest technology.

From our in-house Electric Repair to new installation methods, we set the standards for our industry.



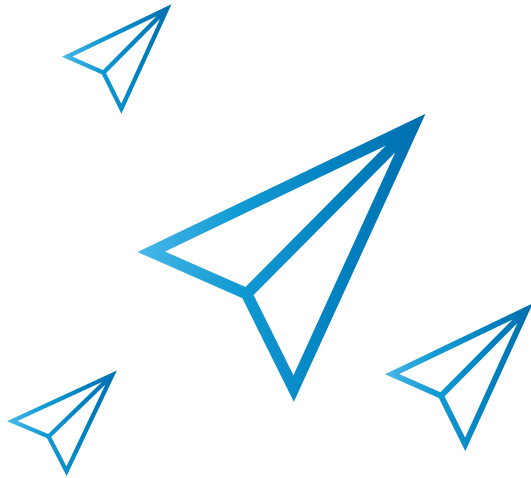
We provide end to end integrated power system solutions locally through best-in-class technology, quality and safety.

Our Works



Transmission line towers including Nuts & Bolts and tower accessories, Line Hardware, Insulators and Earth-Wire.





2075/076

NEPAL ELECTRICITY AUTHORITY

(Community Rural Electrification Department)

Supply, Delivery, Installation/Erection, testing And Commissioning of 11/0.4-0.23KV Electrical Distribution Network At The Distribution Area Of Simta Samudayik Gramin Bidhutikaran Saharaki Sanstha Ltd., Simta Surkhet



2075/076

NEPAL ELECTRICITY AUTHORITY

(Community Rural Electrification Department)

Supply, Delivery, Installation/Erection, testing And Commissioning of 11/0.4-0.23KV Electrical Distribution Network At The Distribution Area Of Jorsalle Gramin Bidhutikaran Saharaki Sanstha Ltd., Aangna, Panchthar

2077



2076/077

NEPAL ELECTRICITY AUTHORITY

(Distribution And Consumer Service Directorate)

Supply and Delivery of Galvanized Line Materials.



2077/078

NEPAL ELECTRICITY AUTHORITY

(Distribution And Consumer Service Directorate)

Supply and Delivery of Line Materials and Hardwares



Clients

We believe, to accomplish any task we have highly qualified technical expertise and experienced person who have worked in the implementation and designing of various electrical distribution projects.



01

Nepal Electricity
Authority



02

Kamalamai
Municipality

कमलामाई नगरपालिका
सिन्धुली

Future



Strategies & Commitments

We develop close relationship with our customers. We provide them with innovative solutions and services aimed at making them successful, on the basis of *competitive price, quality* and *reliability*.

10 Years From Now

We think better business promotion strategies, newer and better energy sources, safer communities, and affordable healthcare and broader educational opportunities. We see a world where people, communities, markets, businesses and industry are seamlessly connected to the information, services and resources needed to live, work, grow and learn.

We see it all because the future is our business.

“

Health, Safety & Environmental management is of paramount importance and the acceptance of responsibilities is taken very seriously. “

Health and safety issue are the most important issues that's why at M-each, we are committed to providing and maintaining a healthy and safe working environment for all our staff, customers and the general public.

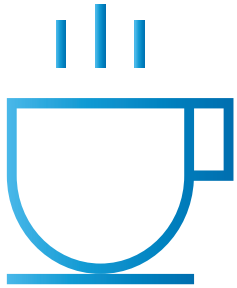
All levels of staff and operatives are trained to high standards in respect of protection and environmental control of both operatives and the General Public.

Prior to the commencement on site a 'Starter Pack' of Health, Safety and Environmental Control is produced which is specific to the site. Included in the pack are Risk Assessments, Method Statements, Risk Control, Specific Site Requirements and all other relevant information.

Health & Safety

We, as a company, have made detailed arrangements for the implementation of our Health & Safety Policy as outlined.

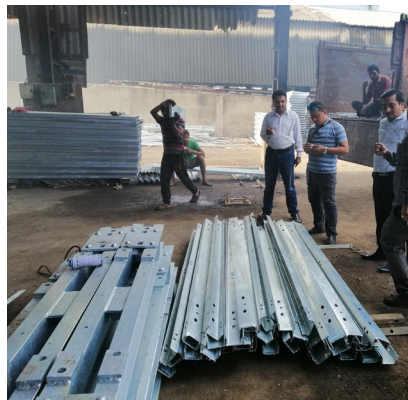
- To comply with relevant local and international health and safety legislation
- To set and maintain high standards of construction and installation safety with an annual review of the internal system
- To identify hazards, assess risks and implement control procedures
- To ensure that staff, customers and visitors are adequately informed of risks, and where appropriate, receive instruction, training and supervision



Gallery



We always ensure you to serve our delicate presence provided a chance to deliver your work, and we have a history of keeping client server relationship smooth throughout the life of company.



“
We regard our employees as our most valuable asset. We treat them with respect, encourage self-expression, personal freedom and growth..



REG **194409/075/076**
VAT **606648534**

Sarada and Sumnima International Pvt. Ltd.

Pepsicola
Kathmandu Metro - 32, Kathmandu
NEPAL

Contact:
[+977]555-55-555X
[+977]9851133303

Web:
hello@saradasumnima.com.np
www.saradasumnima.com.np
facebook.com/saradasumnima

